

Grange Bacstel-IP for Windows version 2.1 Stand Alone version

Re-Installation of Bacstel-IP

This document describes the installation of Bacstel-iP for Windows using a saved copy of the original installation.

The following pre-reqs and items must be available

PC with Windows10 or later.

Spare USB port

Smart card reader

Smart cards with pin numbers

Smart card signing solution CD software e.g. Gemalto (also known as Gemalto or eSigner), or download from your Bank.

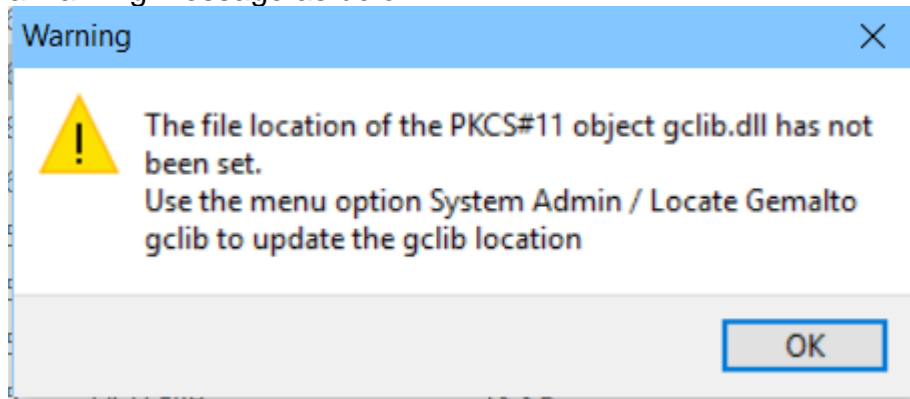
Copy of the original PC Bacstel folder

Emergency license from Grange (issued over the telephone or by e-mail)

Note: Do NOT connect the card reader to the new PC until step 3 below:

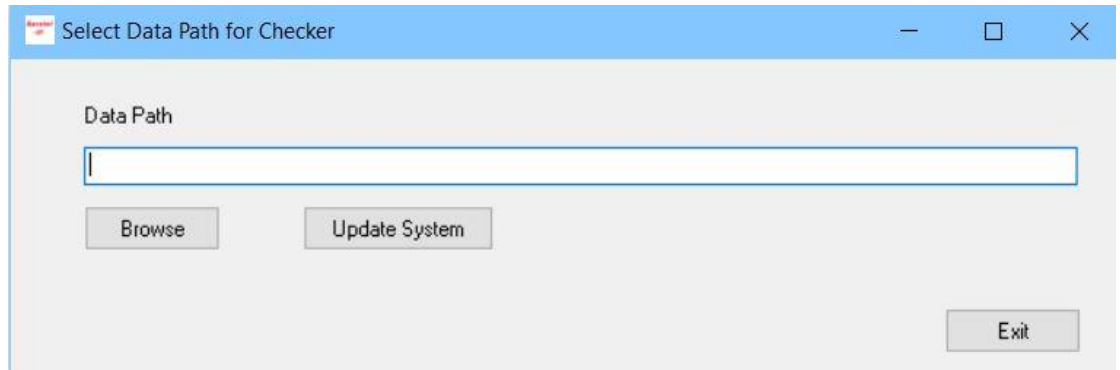
- 1 Install the Bank's smart card signing solution software (e.g. Gemalto) from their CD or download. **The Gemalto eSigner version must be at least 6.3.** To check the version, go to www.grangesystems.com, Support page, and download document "Determine the version of Gemalto eSigner software on PC". Ask your Bank for the latest version.
- 2 Install the card reader drivers if you have them. Some Gemalto installations automatically install the card reader drivers. We suggest you bypass this stage and load the drivers later if needed. You can download them from our Support page <http://www.grangesystems.com/support.php>
- 3 Reboot the PC and attach the smart card reader
- 4 Locate the smart card tool from the signing solution software just installed. This is called the Gemalto Toolbox or Gemalto Toolbox. If you receive a message asking to add URL's to Trusted Sites in IE – answer YES. For each smart card, register the smart card certificate into Windows. This differs between signing solutions, but they are all similar. For Gemalto, the registration link is under the 'Card' or 'Certificates' tab, then register certificates. For later versions of Toolbox, you need to highlight the certificate, then display details. The new screen has the option to register the certificate. You may need the smart card pin number to do this. If a warning dialogue box appears asking if a trusted CA certificate should be installed, take 'YES' option to install it (the default is no).
- 5 Copy the Bacstel-iP PC folder from the existing PC to the new PC
- 6 Copy the contents of the folder c:\grange and c:\grange\checker to the new PC.
- 7 Start the Bacstel system (GRBacstellIP.exe) with User Name ADMIN and password ADMIN. If the system requests a license, use

the temporary license issued by Grange or its Agents. You may get a warning message as below.



Ignore the message and OK.

- 8 Set the data path for the Checker system:
Bacstel Main menu option System Admin, *Select data path for Checker*



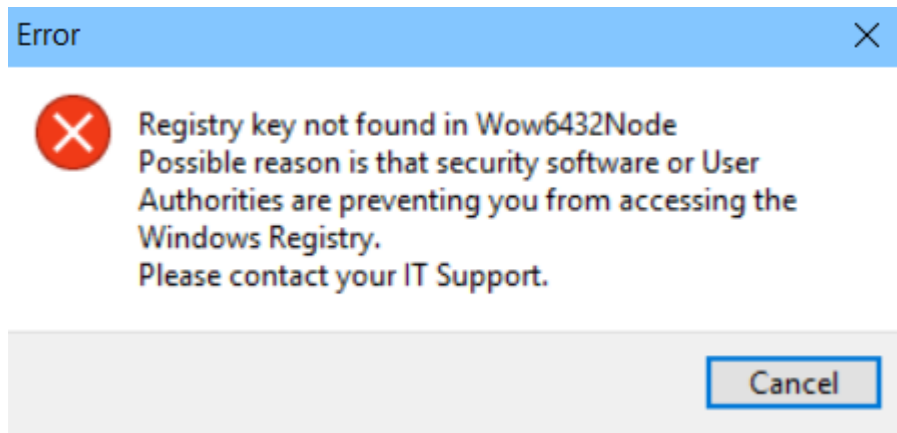
Use the Browse button to locate the folder containing checker files (checker1.dat, checker2.dat etc. These should be in the data subfolder)

Click on checker1.dat and then *Open*

Click the *Update System* button

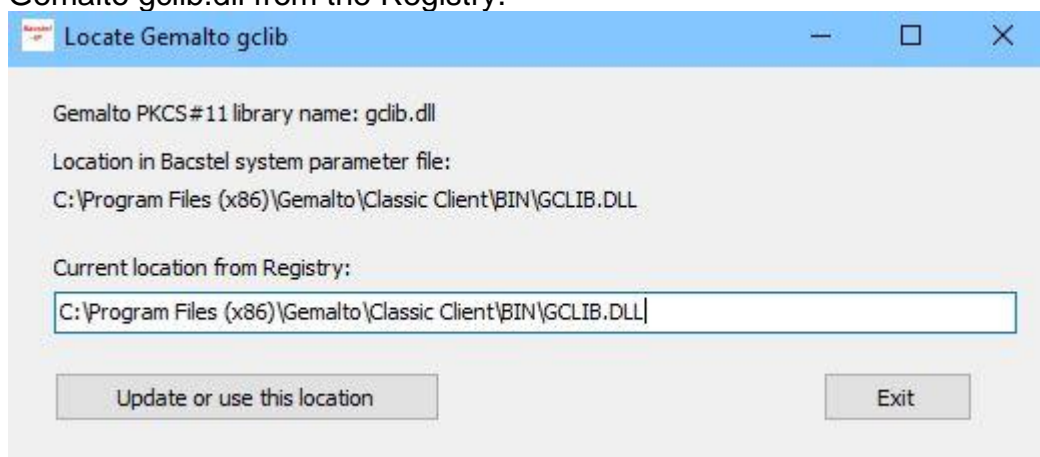
Exit

- 9 Set the location for the Gemalto PKCS#11 library (gclib.dll):
Bacstel main menu option System Admin, *Locate Gemalto gclib*
You may get an error message:



If you see this message it is possible that there are Authorities issues or Security software is preventing you from accessing the Windows Registry. You can not proceed with the installation. Please contact your IT support to resolve the issue. Click on Cancel to clear the message and discontinue with the installation.

When run for the first time, the location in the Bacstel System parameter file will be blank. The system will attempt to find the Gemalto gclib.dll from the Registry.



Use the *Update* button to complete, then *Exit*.

10 Update the Grange Package ID

Menu System Admin / General Setup Parameters.
In the Application ID panel, use the drop down box to display the alternative Application ID's.
Select the ID **SFP9056** and click on OK.

General Setup Parameters

Historic Information

Keep Audit Logs for 59 Days

Keep BACS Reports for 59 Days

Keep Transmitted Files for 59 Days

Keep Submission Reports for 59 Days

Submission Numbers

Next Submission Number: 2339

Application ID

Application ID SFP9056

Help Cancel OK

11. Stop and re-start the Bacstel system.
12. Register the Checker COM dll as follows:

Run the program RegisterComObjects.exe from the checker folder.

You **must** run this as Administrator as follows:

Right click on the program and 'Run as Administrator'.

Register the ch_com.dll using the Register button. You do not need to use the 'Change Location' button unless advised by Grange or their Agents.

13. Re-register the smart card certificates into the Grange Bacstel system. Perform this for each new smart card to be added.

Put a smartcard in the reader

Go into the System Admin menu option and *Comms and Certificate Settings* sub menu.

If the smart card to be added does **NOT** exist in the list of certificates, click Add button. Select the Certificate to be added and hit OK. Then hit OK to return to main server window.

If the smart card **does** exist, remove the certificate by right clicking on the certificate and Remove Certificate. Then Add the certificate as per above.

Note: When adding certificates, if two certificates are displayed from the card and one is 'Utility' and the other is 'Identity', **ONLY** select the 'Identity' certificate. **NEVER** select a 'Utility' certificate.